



Lobby

The Scarlet Singapore | Singapore's first luxury boutique hotel

'MY EGO'

Step into a world of luxury, romance and indulgence.

The Scarlet Singapore offers an unparalleled design experience for the discerning traveller. Bold, provocative and sensuous, this gracious hostess is yours to pamper and indulge with a luxuriously personalised boutique hotel experience every time.

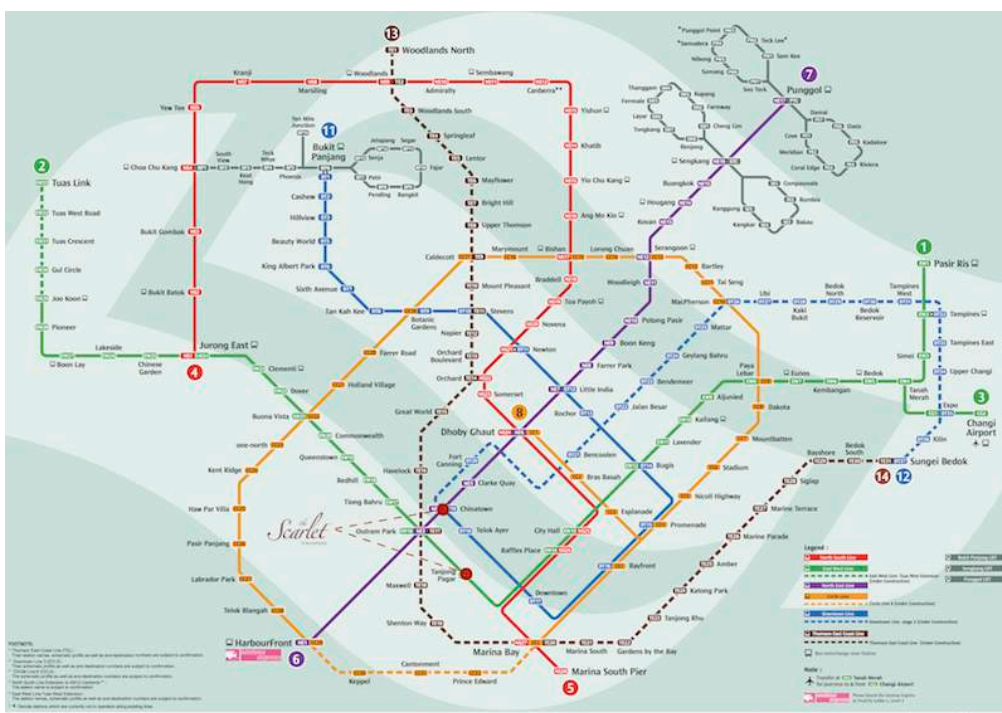
The Scarlet Singapore made her debut in December 2004. Vivacious and uninhibited, the interiors of this 80-room hotel pulsate with an eclectic tension, offering all who enter an adventure for the senses.

Nestled amidst the vibrant Club Street community of creative agencies, specialty shops, boutique spas, trendy restaurants and cafes, wine bars, antique shops and art galleries, The Scarlet Singapore seeks to provide an enriching yet different luxe experience. Historic Erskine Road leads you to a row of 1868 early shophouses and an original 1924 Art Deco building, whose architectural detailing has been expertly retained and lovingly restored.

‘MY HOTSPOTS’

The Scarlet Singapore offers a convenient juxtaposition, being strategically situated in one of Singapore’s historic enclaves and within the Central Business District. An accessible 5 -10 minute walk from Tanjong Pagar and Chinatown MRT stations, and located near Singapore’s financial centre as well as prominent tourist spot, Chinatown. World class attractions such as Universal Studios Singapore, Marina Bay Sands Integrated Resorts and Marine Life Park are all a short 10 -15 minute ride away.

TO	DISTANCE	DURATION (mins)	
		Taxi	MRT: Tanjong Pagar/ Chinatown
Changi Airport (Changi Airport Station)	22 km	25	66
Central Business District (Raffles Place Station)	1.5 km	7	14
Suntec Singapore Convention & Exhibition Centre (Esplanade Station)	3 km	10	26
Orchard Road (Orchard Station)	5 km	15	30
Sentosa/Universal Studios (Harbourfront Station)	6.5 km	13	35
Marina Bay Sands (Bayfront Station)	2.5 km	9	15
Gardens by the Bay (Bayfront Station)	4.4 km	10	25
Singapore Expo (Expo Station)	21.3 km	22	60



'MY ROOMS'

Rooms and suites offer luxurious respite while giving you the option to remain wired to the world. The five individually themed suites, Swank, Opulent, Lavish, Splendour and Passion offer guests unprecedented levels of elegant comfort. The range of detailed aesthetics, unusual materials and flourishes of colour demonstrate that every aspect of The Scarlet Singapore has been conceptualised and designed to provide an optimal blend of luxury and sensuality.

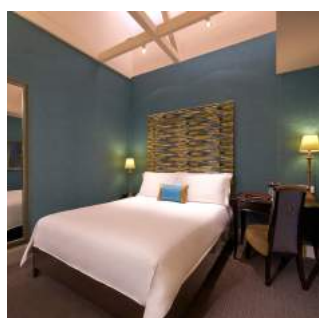
ROOMS	PUBLISHED RATES
-------	-----------------

Standard	S\$380
Deluxe	S\$410
Executive	S\$460
Executive with Balcony	S\$510
Premium	S\$590

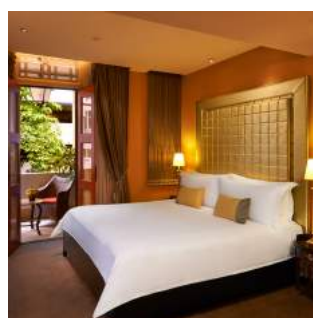
SUITES

Swank	S\$880
Opulent	S\$880
Lavish	S\$980
Splendour	S\$980
Passion	S\$1180

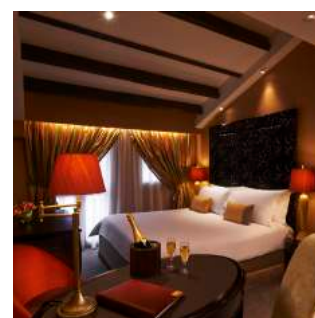
- * All rates are subject to 10% service charge and prevailing taxes
- * Rates quoted are for accommodation only
- * All rates are subject to change without prior notice
- * Check-in after 2:00 pm. Check out at 12:00 pm
- * Non-guaranteed reservations may be released 3 days prior to arrival without notice



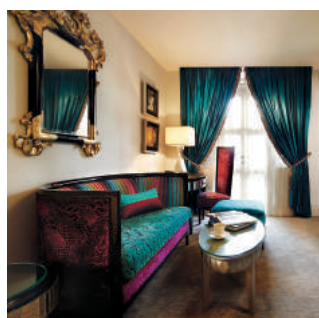
Deluxe



Executive with Balcony



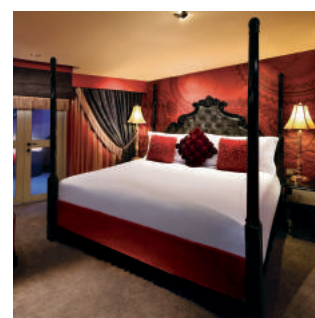
Premium



Swank



Splendour



Passion

‘MY ASSETS’

Adorned with refreshing and welcoming in-room amenities, guests can relax and unwind in true comfort, with personalised and attentive services focused exclusively on the individual.

- Individually controlled air-conditioning
- Smart TV hybrid television
- Computerised wake-up call system
- Voice-mail message system
- Mini bar
- 24-hour security
- Electronic door lock
- Electronic in-room safe
- Hot beverage making facilities
 - ✓ Hairdryer
 - ✓ Bathrobes and slippers
 - ✓ Umbrella
 - ✓ Complimentary wireless internet in all rooms
 - ✓ Personalised wake up call with choice of beverage
 - ✓ Universal socket
 - ✓ Pillow menu: Goose down, Tempur, Non-allergenic foam
 - ✓ Exclusive Flair amenities
 - ✓ Complimentary welcome drink upon check-in
 - ✓ Room service

‘MY STATISTICS’

ROOM TYPE	APPROX SIZES
Standard (3 rooms, no windows)	15-20 sq m
Deluxe (30 rooms) (20 skylights, 10 windows)	16-20 sq m
Executive (18 rooms)	16-20 sq m
Executive with balcony (8 rooms)	18-24 sq m
Premium (16 rooms) (1 no window, 7 skylights, 8 windows)	26-30 sq m
SUITES	
Swank	33 sq m
Opulent	36 sq m
Lavish	42 sq m
Splendour	43 sq m
Passion with Jacuzzi	57 sq m

'MY PLEASURES'

SODA – Jacuzzi

Pure indulgence... let water jets massage those stress knots and whisk worries away at our open-air Jacuzzi set amidst a refreshing burst of flora.

Opening hours: 9:00 am to 9:00 pm daily



SODA

FLAUNT – Workout

An enclave for fitness fiends, yoga practitioners and those who believe “the body is a temple”. Sculpt your body with free weights, treadmill, weight machine, and multi-functional cardio trainer.

Opening hours: 6:00 am to 10:00 pm daily



FLAUNT

BOLD – Meeting Room

With meeting space to accommodate small to medium size groups. Bold provides the perfect inspiration for that “ah ha!” moment. Luxuriously decorated with plush carpeting. Bold sets the mood for lateral thinking and ignites new ways of problem solving.

Seating capacity: 8 persons



The Scarlet Singapore
33 Erskine Road Singapore 069333
Tel: 65 6511 3333 Fax: 65 6511 3303
reservations@thescarlethotels.com

thescarlethotels.com
facebook.com/thescarlethotels

GDS Codes

Amadeus SIN333 | Sabre 50654 | Galileo/Apollo 13131 | Pegasus SCARLET