

Design Features of The Scarlet Singapore

Step into a world of luxury, romance and indulgence. The Scarlet Singapore offers an unparalleled design experience for the discerning traveller. Bold, provocative and sensuous, this gracious hostess is yours to pamper and indulge with a luxuriously personalised boutique hotel experience every time.



The Scarlet Singapore made her debut in December 2004. Vivacious and uninhibited, the interiors of this 80-room hotel pulsate with an eclectic tension, offering all who enter an adventure for the senses.

The property's public spaces, 75 guestrooms and 5 suites had their material palette revitalised with bright jewellery-inspired colours during a makeover in 2013. Incited by the enigmatic gracious hostess "Scarlet", the new interior personifies the discerning muse; her fashion, and her lifestyle.

Arrival

Enter into the world of the gracious hostess, through a portal flanked by water features and through the lobby to focus your eyes on the rear reception wall, accentuated by a glistening beaded wall covering that pays homage to Scarlet's enigmatic personality.



Within the stunning lobby, make yourself comfortable with plush seating upholstered with luxurious Sonia Rykiel, Christian Lacroix, JAB and Pierre Frey velvets and fabrics in cobalt, chartreuse mustard and garnet reds. On the walls are tanned nude panels, which upon closer inspection, reveal stitches artfully inspired by lace hosiery.

Guest Corridors

As guests move further into the premise, the corridors—on each level is dressed in folded and textured wall-coverings in red, purple and fuchsia, enhancing the sense of intimacy as guests are led to the privacy of their own rooms. On the floor, guests' footsteps are softened by new, bespoke carpet with an abstract design that is inspired by the digital prints found on high-fashion runways.

Guestrooms- Uninhibited Luxury

By conjuring ambiances and luxury design elements that in a bold sweep capture a singular personality, The Scarlet Singapore's jewellery-inspired palettes and sensuous charms create an inimitable invitation. Rooms evoke passion, splendour, lavish luxe, opulence and high-fashion swank, rich in arresting hues of amethyst, ruby, sapphire, gold, peridot, bold chartreuse and emerald. Incited by the enigmatic gracious hostess "Scarlet", the rooms personify the discerning muse; her fashion, her lifestyle and her grand abode. If an unprecedented definition to luxurious respite is what you seek, one of the five individually themed suites set apart by distinctive design and new world chic would be your discerning choice.



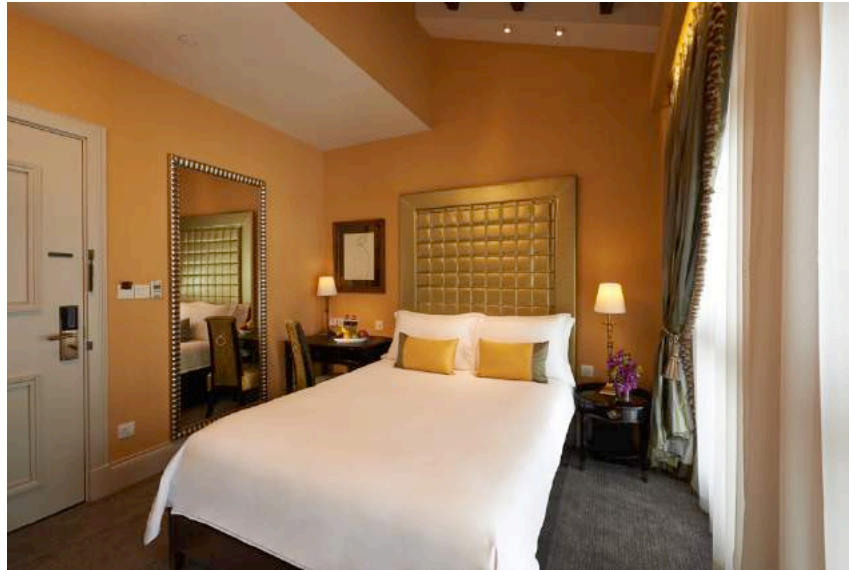
Standard Room

Take the first step into the alluring world of the gracious hostess as this intimate sanctuary greets you. Its simple chic, accentuated with an edge of bold chartreuse, violet and blended harmoniously with a touch of sweet amethyst lulls you into a mode of unwind right away. The thoughtful weaving of the colour palette into various touches of the room—soft accent wallpaper, well-dressed headboard, tufted wool carpet—provides a welcoming delight for the senses.



Deluxe Room

Defined by vibrant hues of refreshing turquoise, bright spruces of bold spring green and lively lemon yellow, get ready to be indulged with a pleasant pop of aesthetic eye candy while indulging still in a personal oasis of calm. You'll appreciate the dapper headboard, a work of art in itself; and a nice hint of nature made possible by the inherent charms of a heritage building – Deluxe Rooms are available with a choice of windows or skylight. Enjoy a morning greeting of gentle sunray, or an evening gazing out to a star lit sky.



Executive Room

Sophistication decked out in full finery with a purposefully appointed palette of refined peridot, shimmering gold and lime green. Exuding confidence with subtle class, bask and luxuriate in this exquisite haven that is wholly and intimately yours.



Executive Room with Balcony

The same distinctive and elegant tones of sophisticated peridot, shimmering gold and lime green define this well-loved sanctuary of classic chic, but made more covetous and inviting with added spatial luxury in the form of a quaint balcony. Indulge your love for the outdoors in a charming historic enclave of this modern city.



Premium Room

Ensclosed in full-bodied matt gold, with the rich glow of coral orange, topaz and chartreuse-green, these resplendent hues are perfectly juxtaposed with an ornate headboard of luxe black velvet featuring an intricate floral design. Revel in the romance and mysterious allure that permeates this hidden gem of a respite, and linger to rest on the curvaceous chaise lounge that beckons at one end of the room. Luxurious draperies with elegant trimmings frame the rooms with windows beautifully, while rooms with skylight provide yet another distinctive definition to beauty.



Swank Suite

Let the cool and dapper style of Swank take your breath away as you step into the stylishly inviting interior. Dressed to impress in chic and complimenting hues of teal, purple and emerald green, and perfectly accompanied by silver framed art pieces; this suite is the epitome of up-to-the-minute sophistication no less. Lounge in the delightful couch with echoing shades of colour, relax in the private balcony or retreat to the bedroom with a mirror paneled headboard for some reflective self-indulgence.



Opulent Suite

Pure decadence is your pleasure to take in a setting defined by rich purples with a bold contrast of chartreuse, reminiscent of royal grandeur. True to its name, Opulent is the essence of luxe for the discerning. Plush draperies, a couch of smooth purple velvet, an ornate wall mirror and a most distinctive headboard that greets you with the full opulence of a magnificent sunburst. Enjoy the additional cosy space from having your own private balcony.



Lavish Suite

A select sanctuary of exquisite extravagance, Lavish is encapsulated in striking accents of ravishing ruby, sultry sapphire and refreshed with blazed yellow. An equally dramatic day bed in matching red velvet awaits to pamper, but the centrepiece of this distinguished suite has to be the much talked about Hästens bed - Asia's first and valued at S\$38,500. With natural fillings of horsehair, flax, wool and pine all painstakingly handmade, this Swedish masterpiece is the gracious hostess' tempting invitation to a good night's sleep.



Splendour Suite

33 Erskine Road Singapore 069333
Tel: +65 6511 3333 Email: enquiry.sg@thescarlethotels.com
www.thescarlethotels.com
A Grace International Hotel
Registration Number 198004221H

Discover splendid luxury in a delightful concoction of lush summery lime greens, topaz, amethyst and peridot from the lovely patterned curtains to the colourful upholstered desk chair. Get whisked away by more whimsical welcomes with a larger than life single settee, and an oh-so-inviting day bed robed in choice Christian Lacroix fabric.



Passion Suite

At the pinnacle of the gracious hostess' luxurious offerings is a private enclave where an air of ardour and romanticism enfolds from an alluring aesthetic dialogue that is sensuously edgy with python, patent leather and leopard prints in garnet red, mysterious black and contemporary grey.

The iconic poster bed provocatively invites you, set against a bespoke \$10,000 wall covering with six layers of embossed printing-a befittingly luxe backdrop where you retreat and rejuvenate.

Experience an added touch of personal service as the elegantly appointed suite opens out to an indulgent private outdoor Jacuzzi terrace. Sip a glass of wine while watching the sunset as a memorable moment is gracefully created.



Bold

Bold provides a functional living space as both a waiting lounge and meeting room that can accommodate small to medium sized groups. It is the perfect inspiration and a contemporary take on residential libraries found in traditional grand mansions in the West. This is a space guests can withdraw to after dinner; enjoy their afternoon tea with a leisure read; conduct a formal business meeting; or simply relax for some 'me' time. The bespoke bookcase slides to reveal a state of the art 60-inch LED TV, and complimentary Wi-fi service is also offered.

The furniture in Bold is graphically patterned in black, spring green, purples and fuchsia. Luxuriously decorated with plush carpeting, the wall opposite the entrance is etched with antique mirror panels both as an aesthetic detail, and to enhance reflection of light; whilst a recessed ceiling with illuminated brass mesh provides indirect mood lighting.

Summary

The Scarlet Singapore's interior design rejuvenation personifies the characteristics of the complex hostess herself, by conjuring ambiances and design elements that in a bold sweep capture a singular personality.



The revamp brings forth a brighter and contemporary palette while still retaining the Sensuous, Gracious, Vivacious, Uninhibited, Bold and Provocative characteristics inherent in the nature of the premise.

For more information, please contact:

Elizabeth Wan
Mobile: +65 9169 4421
Email: Elizabeth.wan@thescarlethotels.com